

**Back Pressure Regulator  
Model BPR10-15**



Hydroplex Corporation  
230 West Gloria Switch Rd.  
Lafayette, LA 70507  
337-233-0626  
[www.hydroplexpumps.com](http://www.hydroplexpumps.com)

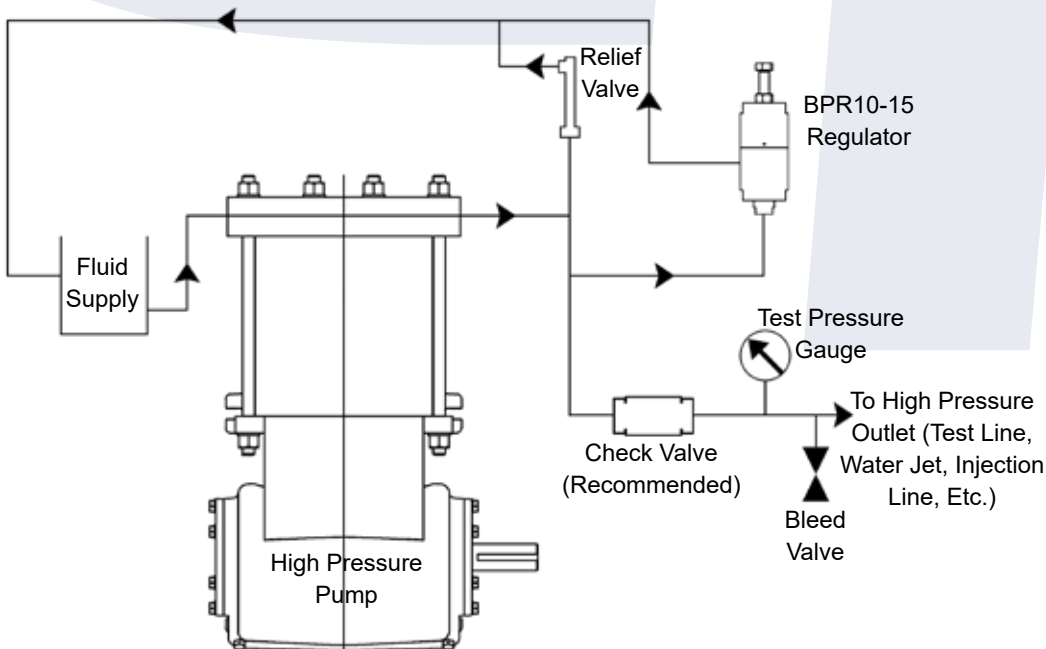
## BACK PRESSURE REGULATOR MODEL BPR10-15

- Provides high pressure fluid control
- Used in hydrostatic testing
- Used in chemical injection
- Used to control back pressure of water jet operations
- 15,000 psi working pressure
- Flow Cv=1.84, 6 GPM @10 psi dP

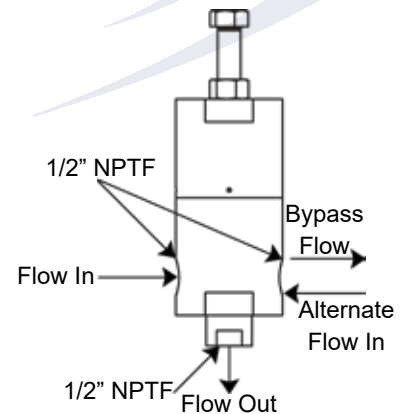
### OPERATION

The model BPR10-15 back pressure regulator valve operates by allowing incoming flow to go back to the source when the set pressure is exceeded. Tightening the spring tensioner bolt increases the valve set pressure and loosening the bolt decreases the valve set pressure. If a check valve is included in the setup as shown below a bleed valve downstream of the check valve is highly recommended.

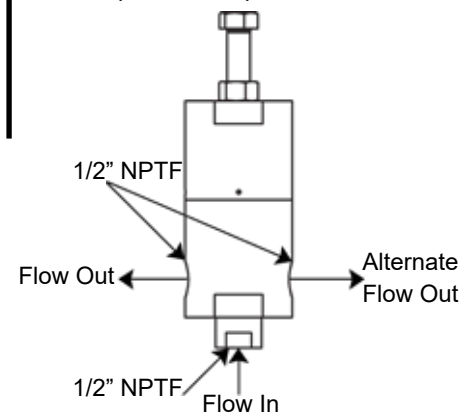
### TYPICAL INSTALLATION



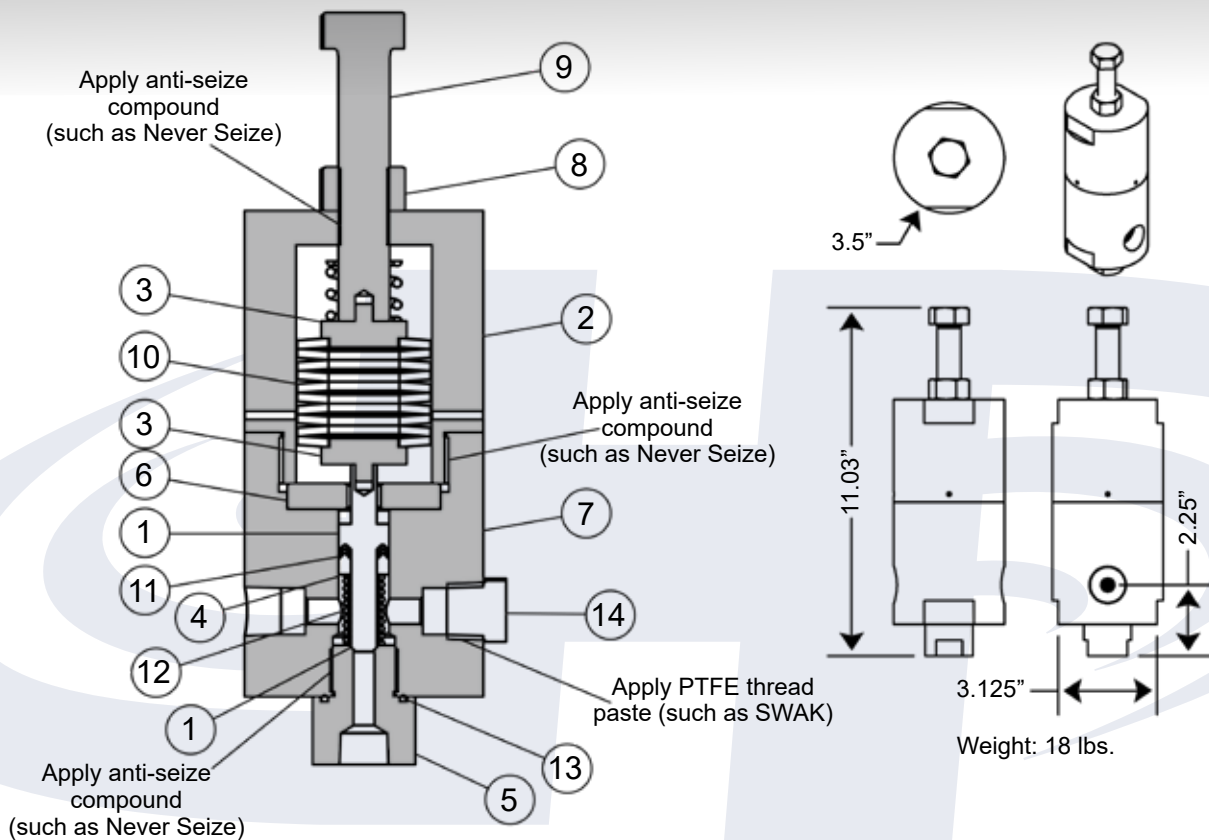
Up to 10,000 psi Orientation



Up to 15,000 psi Orientation



## BPR10-15 PARTS LIST



<u>ITEM</u>	<u>DESCRIPTION</u>	<u>QTY</u>	<u>PART No.</u>
1	Valve Stem	1	HYP-0269*
2	Spring Cylinder	1	HYP-0270
3	Spring Guide	2	HYP-0271
4	Male Packing Adapter	1	HYP-0272
5	Valve Seat	1	HYP-0273*
6	Valve Stem Retaining Insert	1	HYP-0274
7	Valve Body	1	HYP-0275
8	3/4" - 16, Lock Nut	1	HYP-0277
9	Pressure Adjustment Bolt	1	HYP-0276
10	Bellville Washer	10	HYP-0280
11	Packing	2	HYP-0292P*
12	Packing Spring	1	HYP-0374*
13	Packing Barrel O-Ring	1	HYP-0125
14	1/2" NPT Plug Steel 15K PSI	1	HYP-0411**

\* Recommended Spare Parts

\*\* 15,000 psi plug provided for port not utilized.